

2 BEDROOM CLASSIC

TYPE B1

61 sqm (657 sqft)

MIRRORED

BLOCK 2

#02-01 TO #04-01

BLOCK 2

#02-07 TO #04-07

BLOCK 4

#02-08 TO #04-08

BLOCK 4

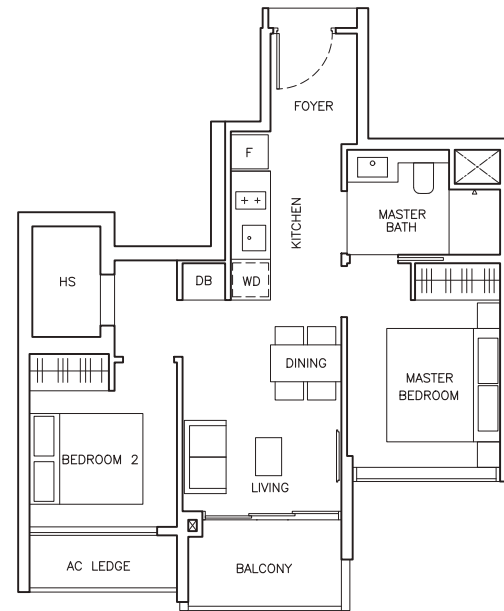
#02-14 TO #04-14

BLOCK 6

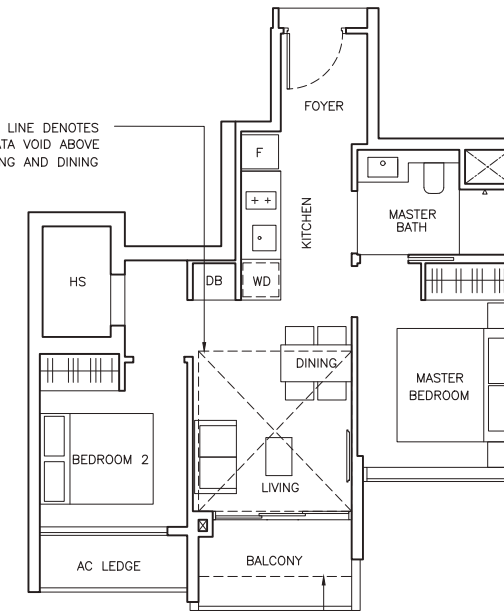
#02-15 TO #04-15

BLOCK 6

#02-21 TO #04-21



DOTTED LINE DENOTES STRATA VOID ABOVE LIVING AND DINING



LIGHTWEIGHT CANOPY ABOVE

TYPE B1(PH)

70 sqm (753 sqft)

MIRRORED

BLOCK 2

#05-07

BLOCK 2

#05-01

BLOCK 4

#05-14

BLOCK 4

#05-08

BLOCK 6

#05-21

BLOCK 6

#05-15

Strata void area of 9 sqm / 96 sqft above living and dining with high volume ceiling of 4600mm high.

TYPE B1(p)

61 sqm (657 sqft)

MIRRORED

BLOCK 2

#01-01

BLOCK 2

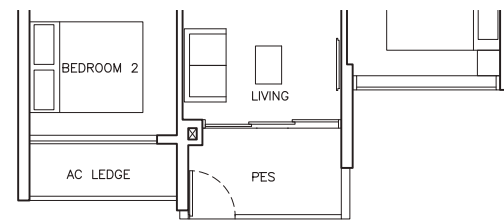
#01-07

BLOCK 6

#01-15

BLOCK 6

#01-21



TYPE B1a(p)

61 sqm (657 sqft)

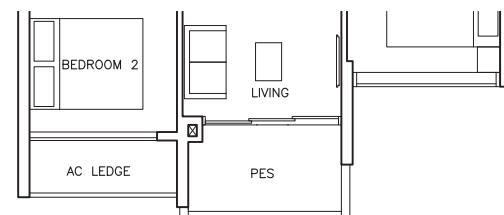
MIRRORED

BLOCK 4

#01-08

BLOCK 4

#01-14



NOTE

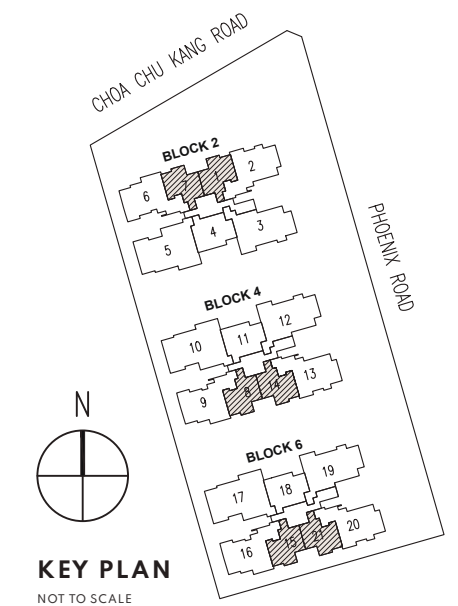
- Area includes AC ledge, balcony, private enclosed space (PES) and strata void (where applicable).
- The above plans and illustrations are subject to change as may be required or approved by the relevant authorities.
- All floor areas are approximate only and subject to final survey.
- Please refer to key plan for orientation.
- Service voids, RC ledge and RC trellis are excluded from strata area.
- The balcony shall not be enclosed. Only approved balcony screens are to be used. For an illustration of the approved balcony screen, please refer to page 44 of this brochure.



SCALE

LEGEND

- WD - Washer cum Dryer
- F - Fridge
- DB - Electrical Distribution Board
- ST - Store
- HS - Household Shelter
- AC Ledge - Air Conditioner Ledge



2 BEDROOM CLASSIC

2
BEDROOM
DELUXE

TYPE B2

67 sqm (721 sqft)

MIRRORED

BLOCK 4

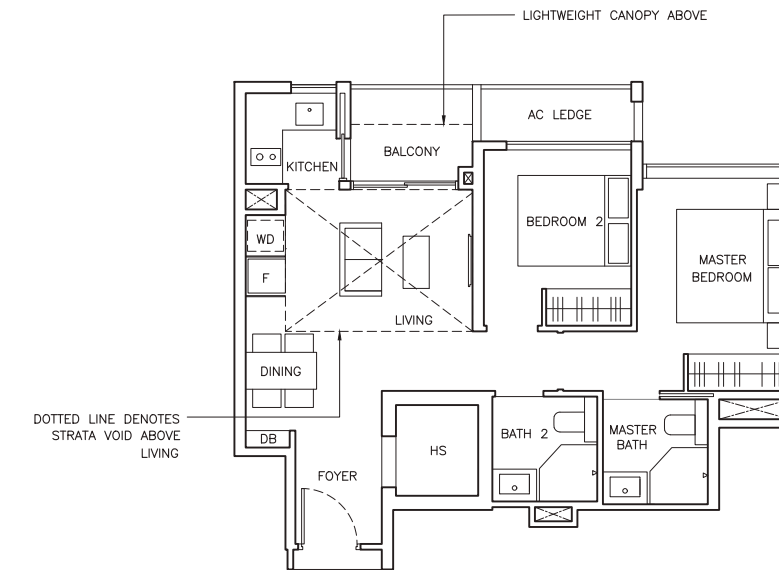
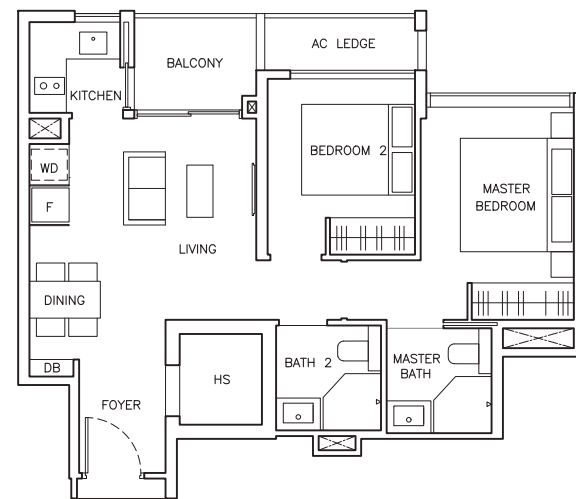
#02-11 TO #04-11

BLOCK 2

#02-04 TO #04-04

BLOCK 6

#02-18 TO #04-18



TYPE B2(PH)

76 sqm (818 sqft)

MIRRORED

BLOCK 2

#05-04

BLOCK 4

#05-11

BLOCK 6

#05-18

Strata void area of 9 sqm / 97 sqft above living with high volume ceiling of 4600mm high.

TYPE B2(p)

67 sqm (721 sqft)

MIRRORED

BLOCK 4

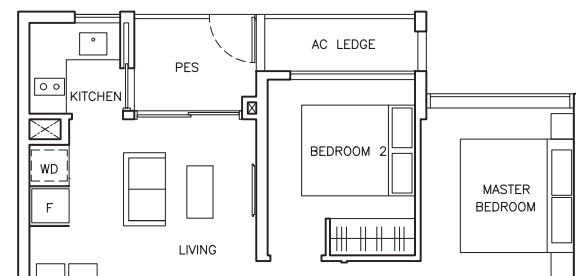
#01-11

BLOCK 2

#01-04

BLOCK 6

#01-18

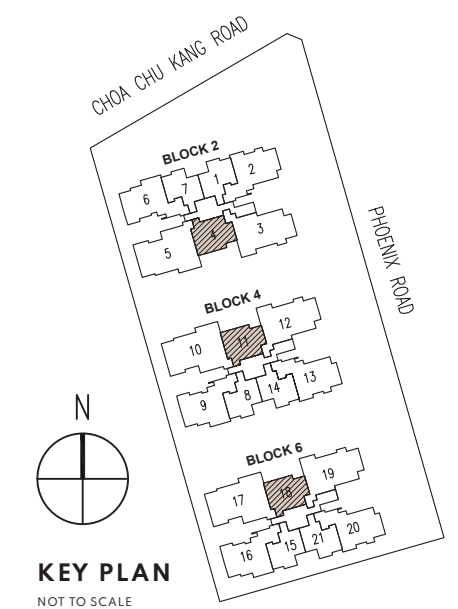
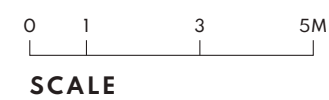


NOTE

- Area includes AC ledge, balcony, private enclosed space (PES) and strata void (where applicable).
- The above plans and illustrations are subject to change as may be required or approved by the relevant authorities.
- All floor areas are approximate only and subject to final survey.
- Please refer to key plan for orientation.
- Service voids, RC ledge and RC trellis are excluded from strata area.
- The balcony shall not be enclosed. Only approved balcony screens are to be used. For an illustration of the approved balcony screen, please refer to page 44 of this brochure.

LEGEND

- WD - Washer cum Dryer
- F - Fridge
- DB - Electrical Distribution Board
- ST - Store
- HS - Household Shelter
- AC Ledge - Air Conditioner Ledge



2
BEDROOM
DELUXE

3
BEDROOM
CLASSIC

TYPE C1

94 sqm (1012 sqft)

MIRRORED

BLOCK 4

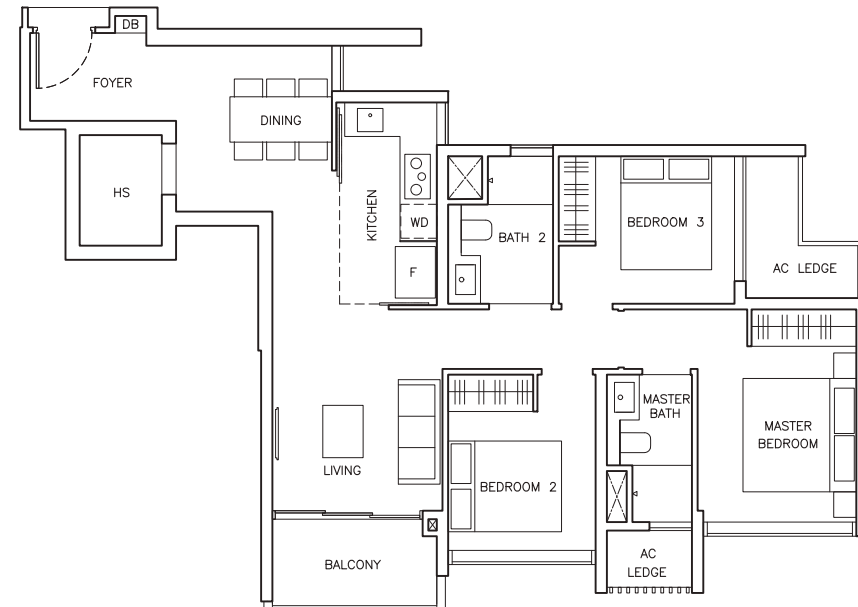
#02-13 TO #04-13

BLOCK 2

#02-02 TO #04-02

BLOCK 6

#02-20 TO #04-20

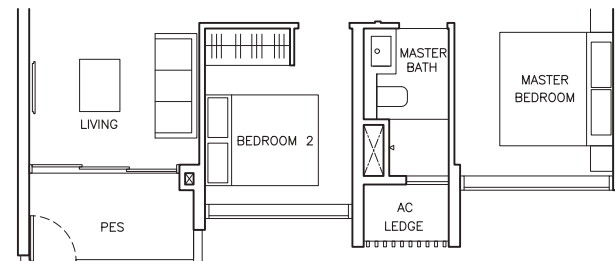


TYPE C1(p)

94 sqm (1012 sqft)

BLOCK 6

#01-20



TYPE C1a(p)

94 sqm (1012 sqft)

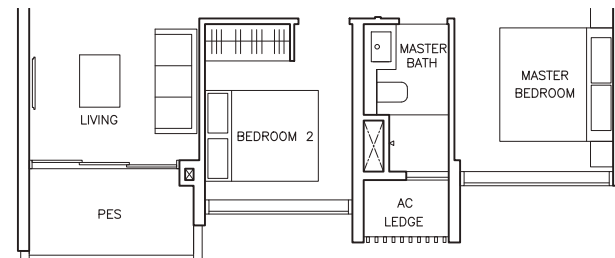
MIRRORED

BLOCK 4

#01-13

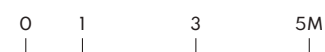
BLOCK 2

#01-02



NOTE

- Area includes AC ledge, balcony, private enclosed space (PES) and strata void (where applicable).
- The above plans and illustrations are subject to change as may be required or approved by the relevant authorities.
- All floor areas are approximate only and subject to final survey.
- Please refer to key plan for orientation.
- Service voids, RC ledge and RC trellis are excluded from strata area.
- The balcony shall not be enclosed. Only approved balcony screens are to be used. For an illustration of the approved balcony screen, please refer to page 44 of this brochure.



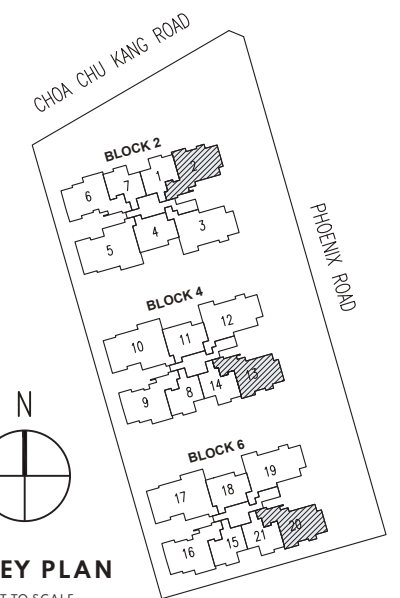
SCALE

LEGEND

- WD - Washer cum Dryer
- F - Fridge
- DB - Electrical Distribution Board
- ST - Store
- HS - Household Shelter
- AC Ledge - Air Conditioner Ledge



KEY PLAN
NOT TO SCALE



3
BEDROOM
CLASSIC

TYPE C1(PH)

106 sqm (1141 sqft)

Strata void area of 12 sqm / 129 sqft above living with high volume ceiling of 4600mm high.

MIRRORED

BLOCK 2

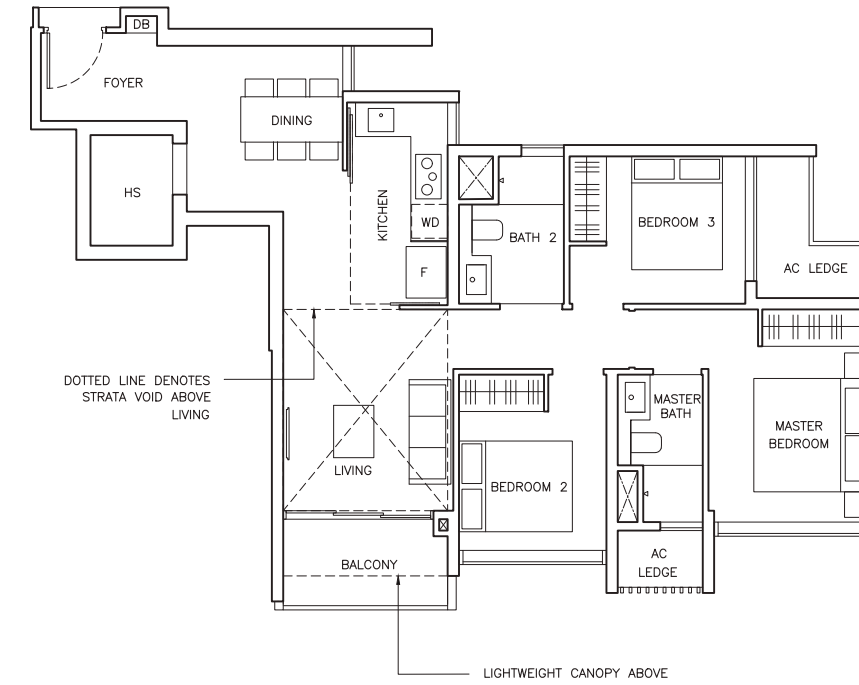
#05-02

BLOCK 4

#05-13

BLOCK 6

#05-20



3
BEDROOM
+ STUDY
COSPACE

TYPE C2

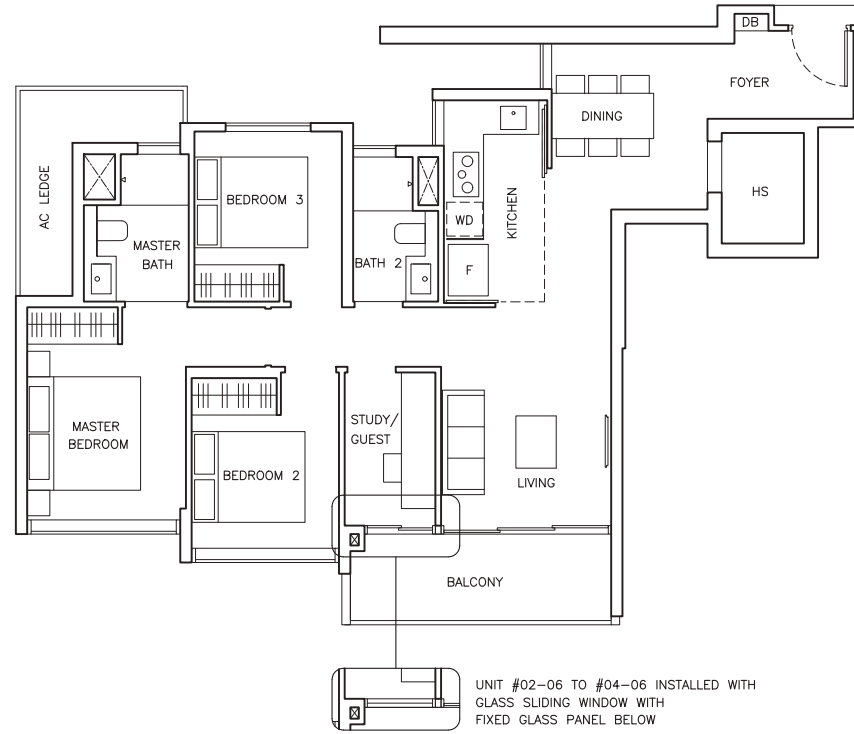
103 sqm (1109 sqft)

MIRRORED

BLOCK 4
#02-09 TO #04-09

BLOCK 2
#02-06 TO #04-06

BLOCK 6
#02-16 TO #04-16



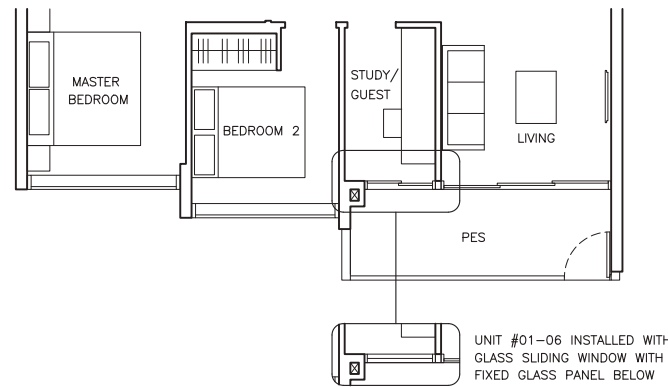
TYPE C2(p)

103 sqm (1109 sqft)

MIRRORED

BLOCK 6
#01-16

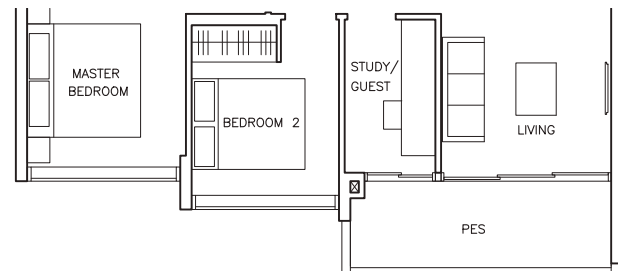
BLOCK 2
#01-06



TYPE C2a(p)

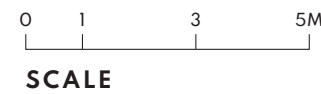
103 sqm (1109 sqft)

BLOCK 4
#01-09



NOTE

- Area includes AC ledge, balcony, private enclosed space (PES) and strata void (where applicable).
- The above plans and illustrations are subject to change as may be required or approved by the relevant authorities.
- All floor areas are approximate only and subject to final survey.
- Please refer to key plan for orientation.
- Service voids, RC ledge and RC trellis are excluded from strata area.
- The balcony shall not be enclosed. Only approved balcony screens are to be used. For an illustration of the approved balcony screen, please refer to page 44 of this brochure.

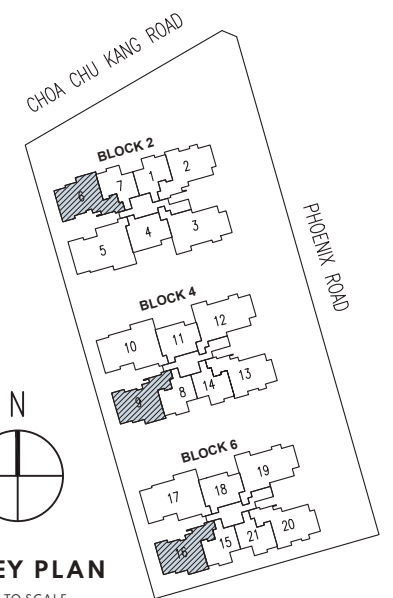


LEGEND

- WD - Washer cum Dryer
- F - Fridge
- DB - Electrical Distribution Board
- ST - Store
- HS - Household Shelter
- AC Ledge - Air Conditioner Ledge



KEY PLAN
NOT TO SCALE



3
BEDROOM
+ STUDY
COSPACE

TYPE C2(PH)

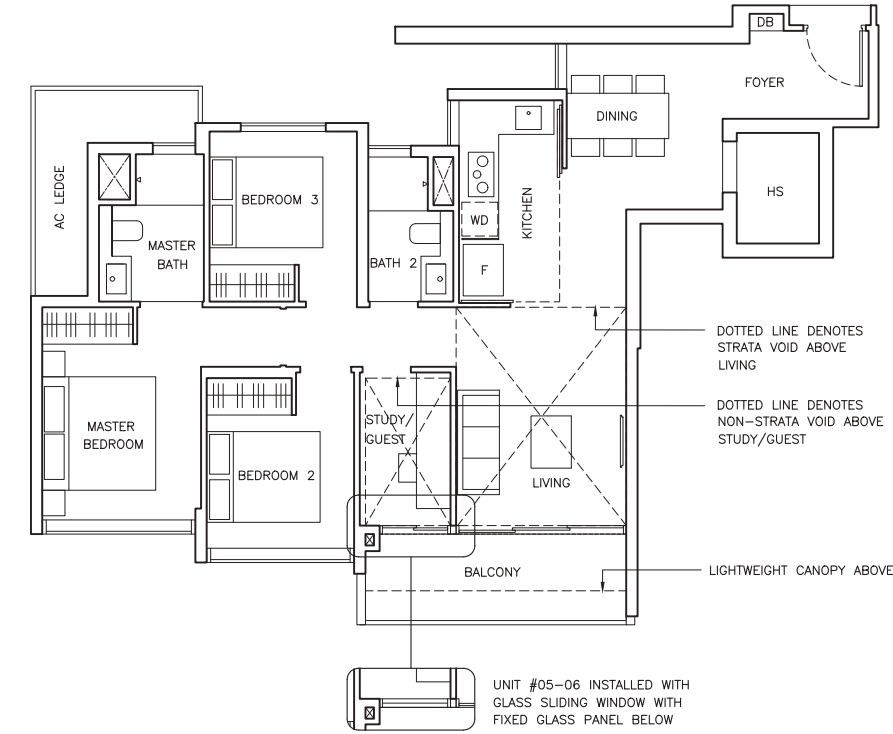
116 sqm (1249 sqft)

MIRRORED

BLOCK 2
#05-06

BLOCK 4
#05-09

BLOCK 6
#05-16



Strata void area of 13 sqm / 140 sqft above living with high volume ceiling of 4600mm high.

4
BEDROOM
CLASSIC

TYPE D1

112 sqm (1206 sqft)

MIRRORED

BLOCK 4

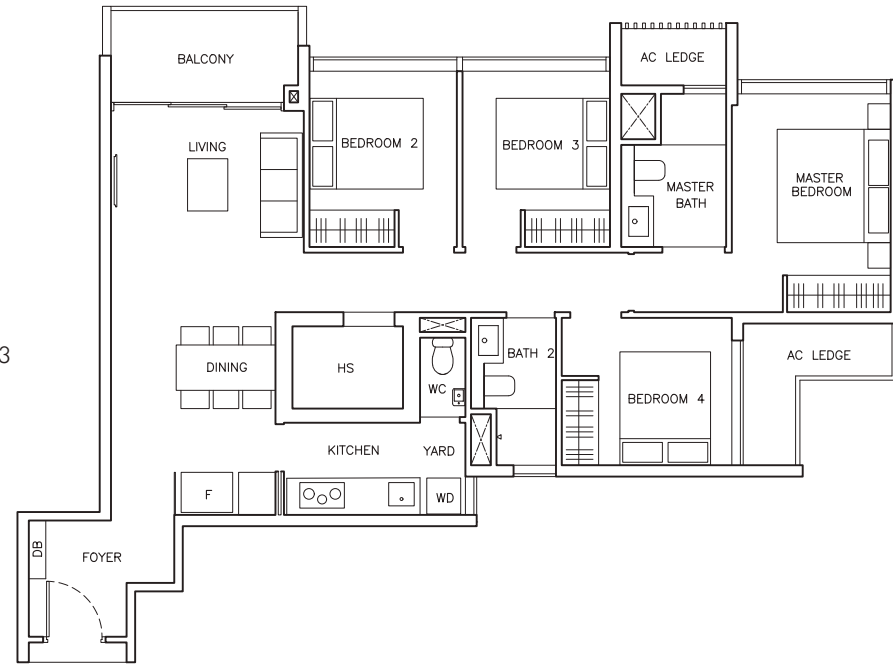
#02-12 TO #04-12

BLOCK 2

#02-03 TO #04-03

BLOCK 6

#02-19 TO #04-19



TYPE D1(p)

112 sqm (1206 sqft)

MIRRORED

BLOCK 4

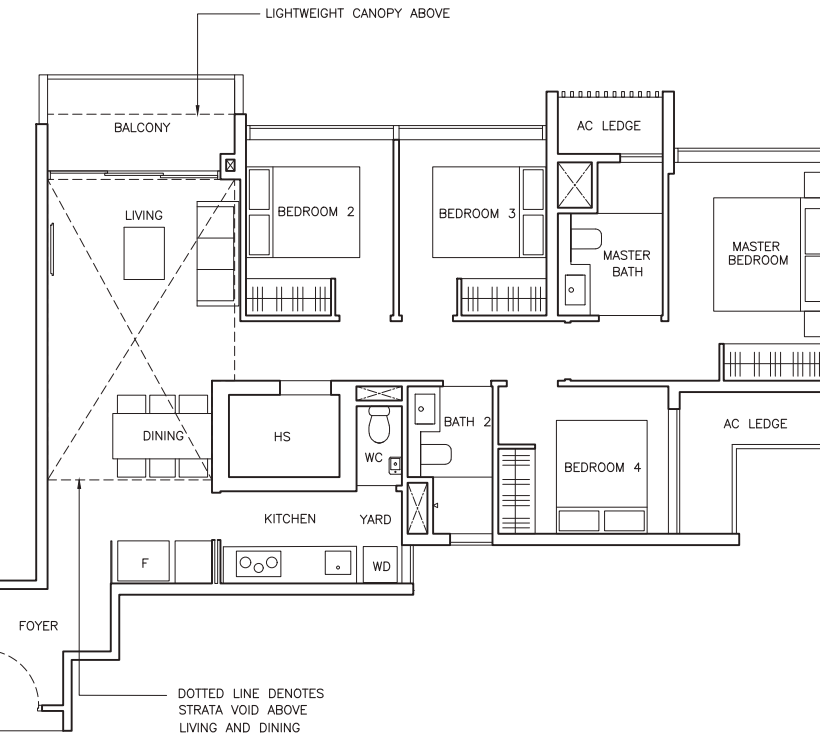
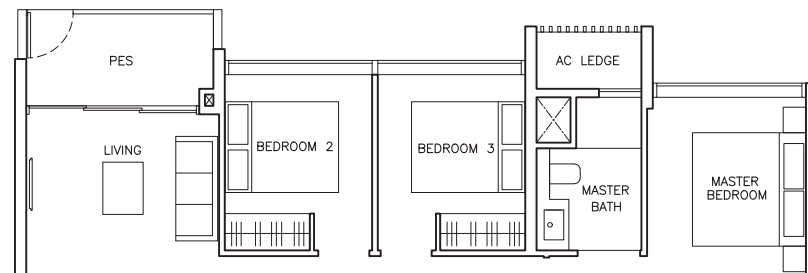
#01-12

BLOCK 2

#01-03

BLOCK 6

#01-19



TYPE D1(PH)

131 sqm (1410 sqft)

Strata void area of 19 sqm / 204 sqft above living and dining with high volume ceiling of 4600mm high.

MIRRORED

BLOCK 2

#05-03

BLOCK 4

#05-12

BLOCK 6

#05-19

NOTE

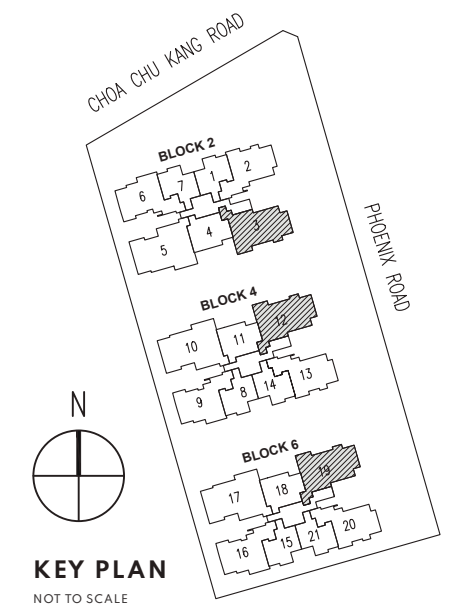
- Area includes AC ledge, balcony, private enclosed space (PES) and strata void (where applicable).
- The above plans and illustrations are subject to change as may be required or approved by the relevant authorities.
- All floor areas are approximate only and subject to final survey.
- Please refer to key plan for orientation.
- Service voids, RC ledge and RC trellis are excluded from strata area.
- The balcony shall not be enclosed. Only approved balcony screens are to be used. For an illustration of the approved balcony screen, please refer to page 44 of this brochure.

LEGEND

- WD - Washer cum Dryer
- F - Fridge
- DB - Electrical Distribution Board
- ST - Store
- HS - Household Shelter
- AC Ledge - Air Conditioner Ledge

0 1 3 5M

SCALE



KEY PLAN
NOT TO SCALE

4
BEDROOM
CLASSIC

4
BEDROOM
+ STUDY
COSPACE

TYPE D2

129 sqm (1389 sqft)

MIRRORED

BLOCK 4

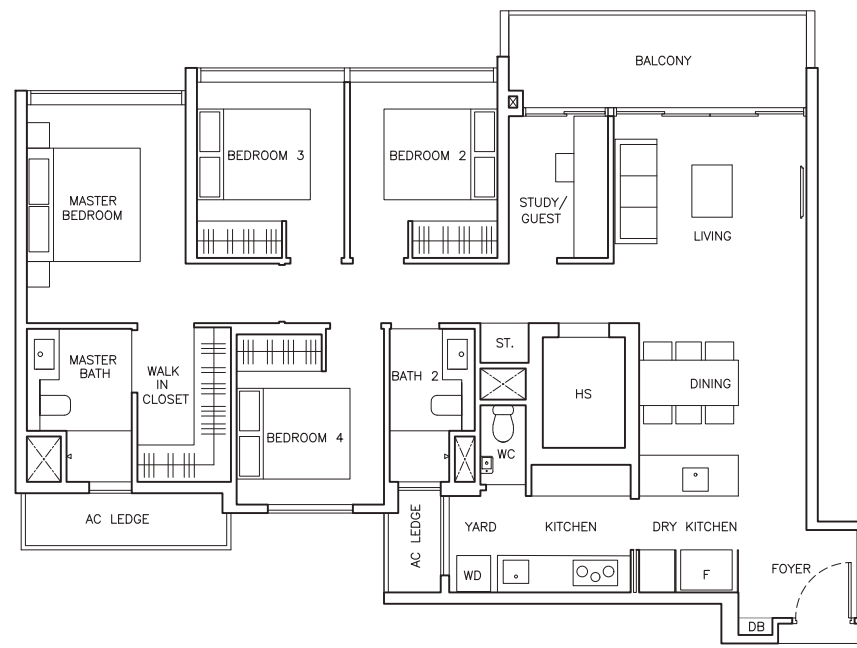
#02-10 TO #04-10

BLOCK 2

#02-05 TO #04-05

BLOCK 6

#02-17 TO #04-17



TYPE D2(p)

129 sqm (1389 sqft)

MIRRORED

BLOCK 4

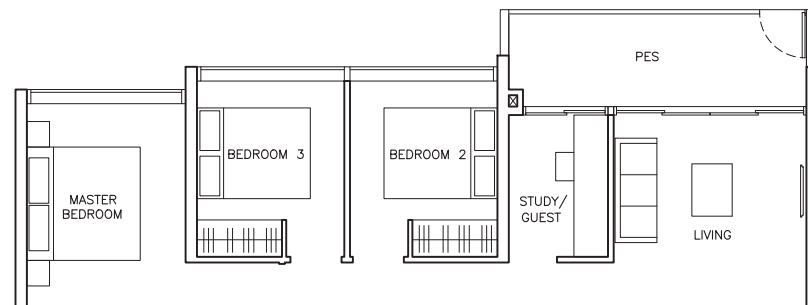
#01-10

BLOCK 2

#01-05

BLOCK 6

#01-17



NOTE

- Area includes AC ledge, balcony, private enclosed space (PES) and strata void (where applicable).
- The above plans and illustrations are subject to change as may be required or approved by the relevant authorities.
- All floor areas are approximate only and subject to final survey.
- Please refer to key plan for orientation.
- Service voids, RC ledge and RC trellis are excluded from strata area.
- The balcony shall not be enclosed. Only approved balcony screens are to be used. For an illustration of the approved balcony screen, please refer to page 44 of this brochure.



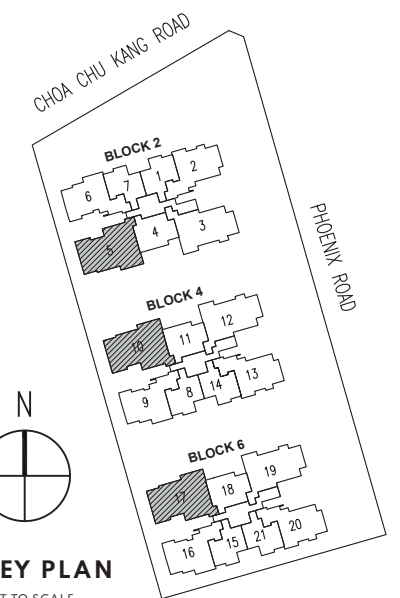
SCALE

LEGEND

- WD - Washer cum Dryer
- F - Fridge
- DB - Electrical Distribution Board
- ST - Store
- HS - Household Shelter
- AC Ledge - Air Conditioner Ledge



KEY PLAN
NOT TO SCALE



4
BEDROOM
+ STUDY
COSPACE

TYPE D2(PH)

152 sqm (1636 sqft)

MIRRORED

BLOCK 2

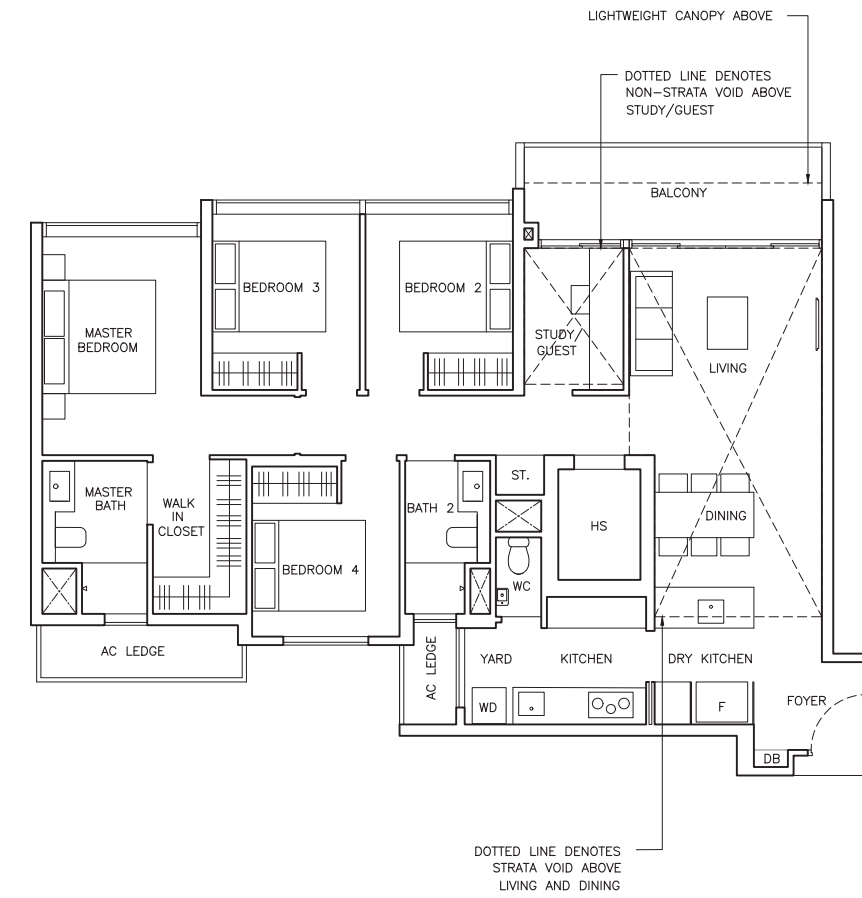
#05-05

BLOCK 4

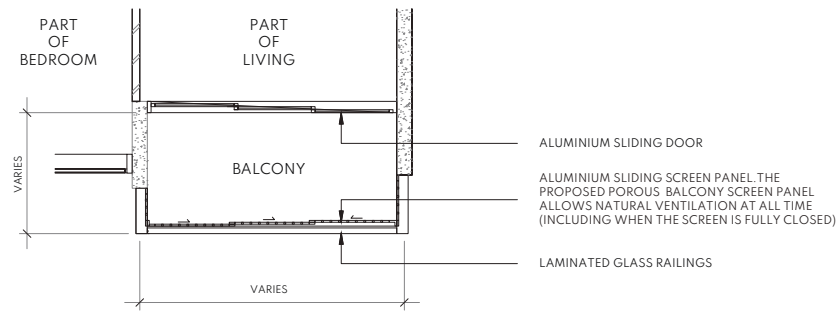
#05-10

BLOCK 6

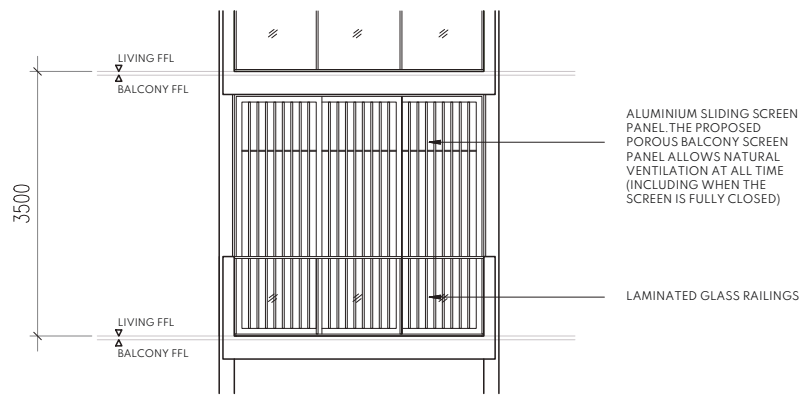
#05-17



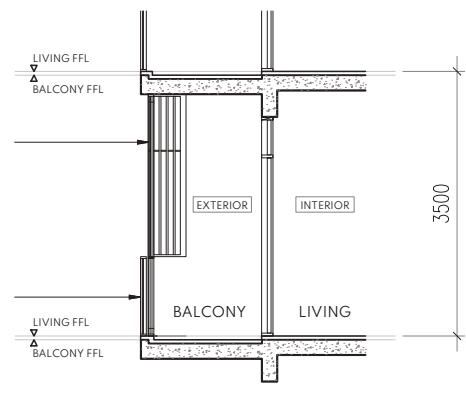
BALCONY SCREEN DESIGN



TYPICAL RETRACTABLE BALCONY SCREEN - PLAN



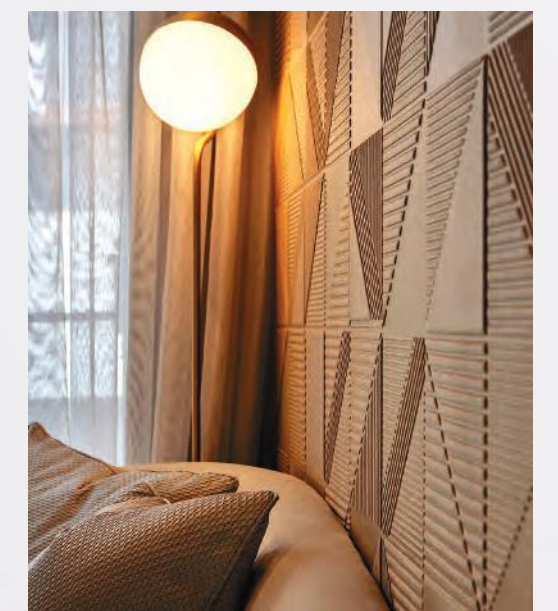
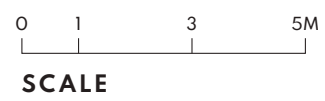
TYPICAL RETRACTABLE BALCONY SCREEN - ELEVATION



TYPICAL RETRACTABLE BALCONY SCREEN - SECTION

BALCONY SCREEN NOTE

- Balcony shall not be enclosed. Only approved balcony screens are to be used.
- Balcony screens are not inclusive in the sales of unit. Should the purchaser wishes to install balcony screen after taking over their unit, they are to engage their own licensed contractor to fabricate and install the screens base on the approved design and to submit and obtain approval from the MCST and relevant authorities before installation at their own cost.



For illustrative purposes only.

LEVEL UP YOUR HOME SMARTS



EASE LIFE WITH EFFORTLESS CONTROL

Embrace one-touch convenience with an interconnected network of home automation, security features and lifestyle enhancements at your fingertips.

INSPIRED LIVING



KEEP FIT, STAY ACTIVE

Take your pick from Zumba, Yoga, Pilates or Dance classes.



UNLIMITED PRIVILEGES

Enjoy exclusive deals and promotions.



LEARN NEW SKILLS

Learn to swim safely from experienced and certified instructors.

VIRTUAL CONCIERGE



24/7 FACILITY BOOKING

Make a booking for your desired facility whenever, wherever.



PAYMENT MADE EASY

Pay your maintenance fees through the app.



HASSLE-FREE HOME HELP

Choose from a list of services that include house cleaning, air-conditioner maintenance and more.

ONE-TOUCH CONVENIENCE



SMART GATEWAY

The heart of smart living technology.



YOUR VIRTUAL DOORMAN

Unlock your doors remotely.



PRE-ARRIVAL COOLING

Your home is cooled to the right temperature even before you arrive.

Disclaimer: The content above is subject to terms and conditions. Homeowners will be required to log in via the phone application to access the functions and services listed above. Inspired Living services are subject to change without prior notice and additional charges may apply.